

# **COMMUNITY RESILIENCE PLANNING IN COASTAL NORTH CAROLINA**

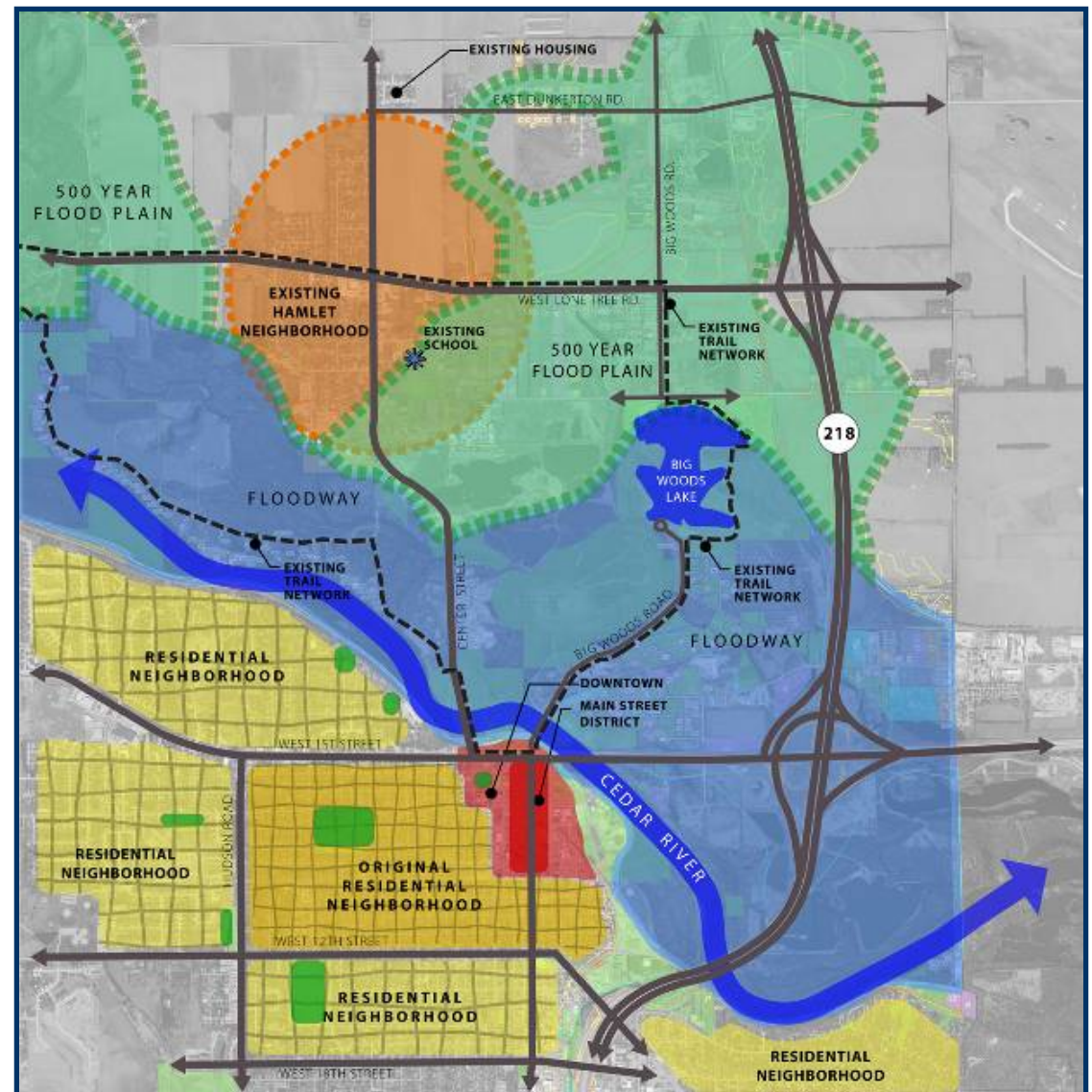
2012 NOAA in the Carolinas Conference

Linda Rimer, US EPA

March 15, 2012

# Background: Iowa Assistance

- 2008 floods & tornadoes
- 2009 EPA & FEMA partner & provide smart growth assistance to 5 communities



# FEMA-EPA

## Memorandum of Agreement

Incorporate sustainability and smart growth practices into hazard mitigation planning and long term disaster recovery and hazards resilience into smart growth assistance



# **FEMA-EPA**

## **Memorandum of Agreement**

Four goals:

1. Enhanced agency coordination
  - EPA Smart Growth Program
  - FEMA Long-term Disaster Recovery Program
  - FEMA Mitigation Planning Program
2. Smart growth assistance
3. Community resilience & climate change adaptation
4. Cross training & joint training

# **Background: Coastal Community Resilience Pilot Projects**

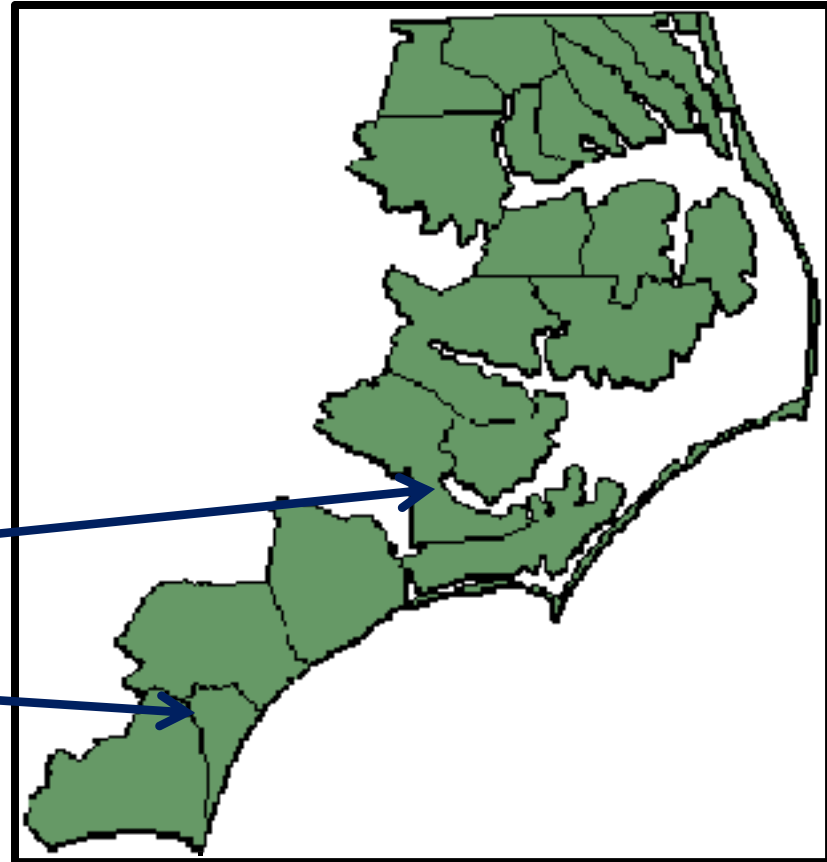
- **Purpose:**
  - Help communities use the best available data to determine how climate change might impact local land use and infrastructure investments
  - Develop strategies that reduce vulnerability to known hazards, build long-term community resilience, & provide economic, environmental, & social benefits.
- **Identified North Carolina: abundant data, tools (iRISK), research**
- **Held 2011 June scoping workshop**

# Pilot Project Locations

- Solicited proposals & selected 2 communities

- New Bern

- Wilmington

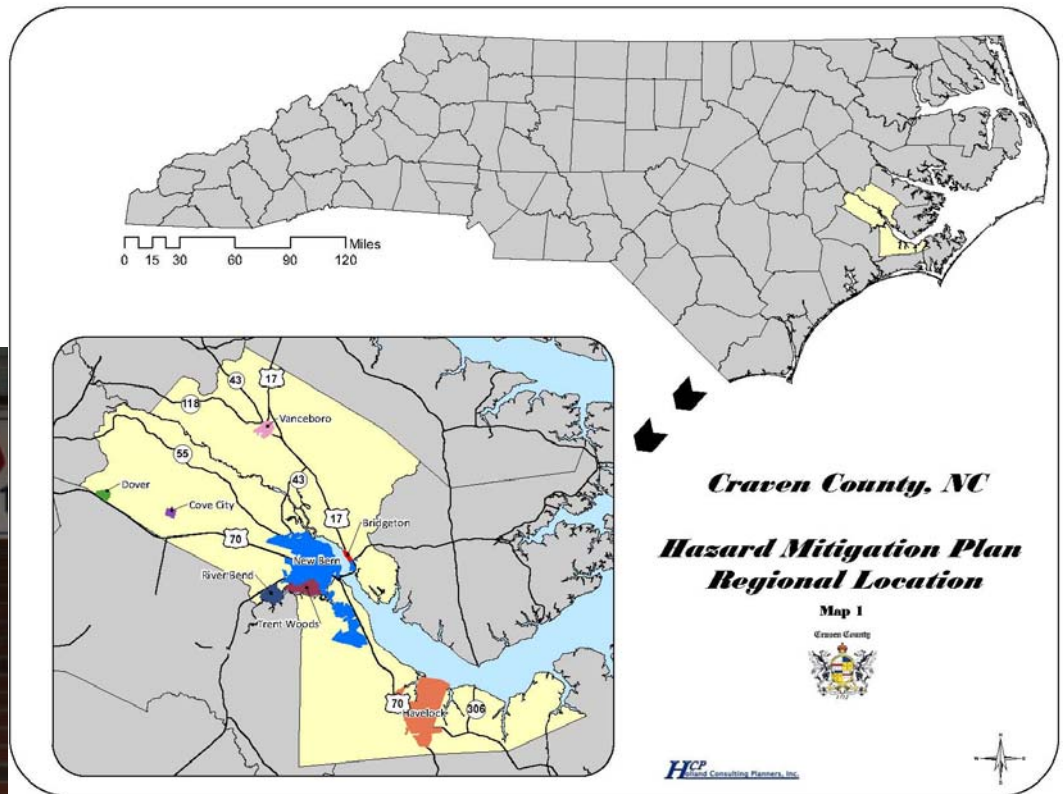


# New Bern

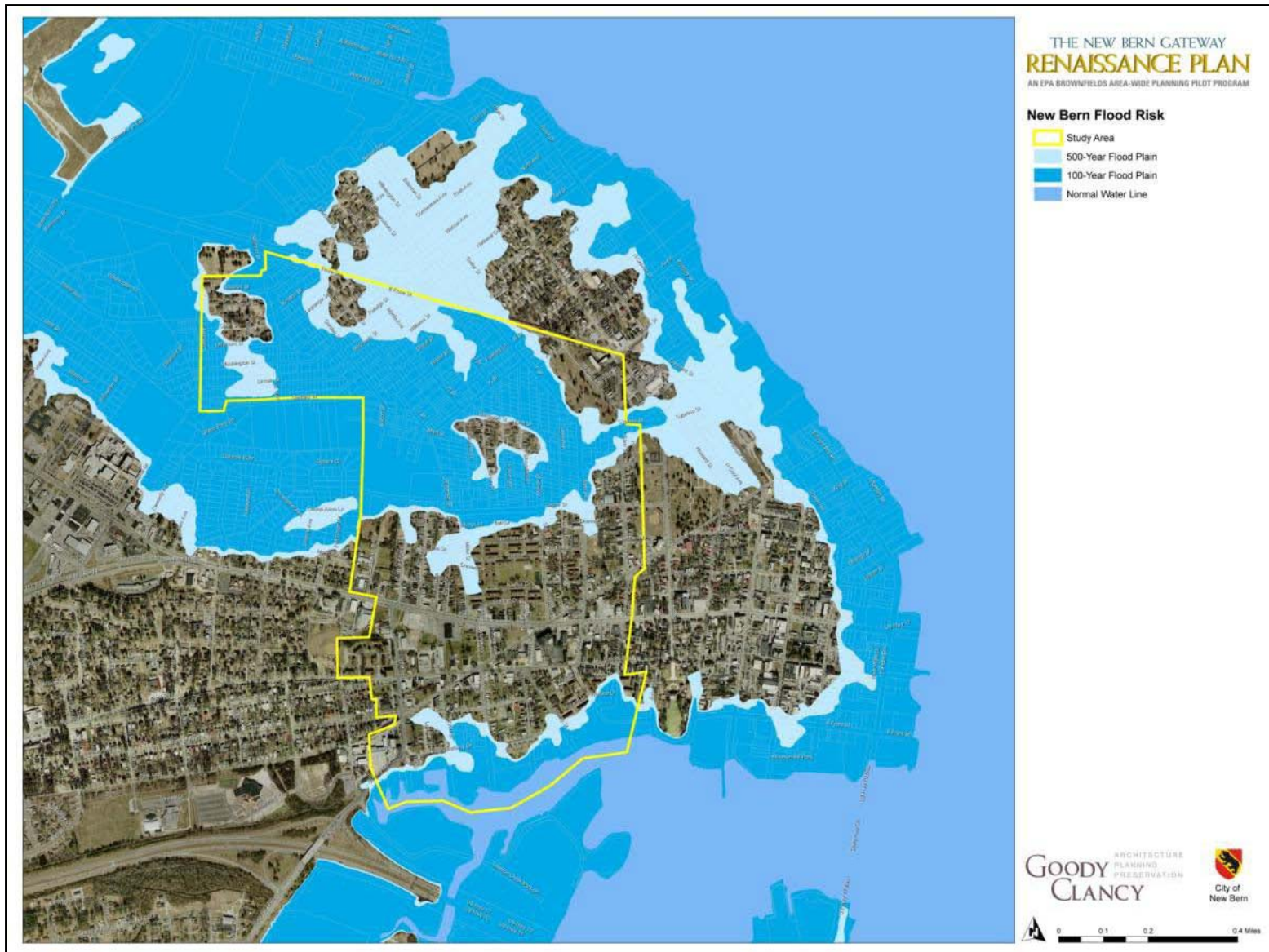
2010 Population: 29,524



Photo Credit: City of New Bern



# New Bern



# New Bern

- Project Partners
  - City of New Bern goals
- Project Goals
  - Examine toolbox of local plans and policy instruments
  - Identify land use & green infrastructure solutions to adapt to the impacts of climate change & reduce the risk of vulnerable populations within the Five Points neighborhoods
  - Support greater consistency between hazard mitigation plan, local plans, development codes, & regulations

# Wilmington

- 2010 population: 202,667
- Largest coastal municipality in NC
- County hazard mitigation plan recognizes sea level rise as one of the high-risk hazards facing region



Photo Credit: City of Wilmington



Photo Credit: City of Wilmington



Photo Credit: City of Wilmington



Photo Credit: City of Wilmington

# Wilmington

## Project partners

- City of Wilmington
- New Hanover County
- Cape Fear Public Utility Authority

## Project goals

- Identify potential flood risks posed by sea-level rise to the water and sewer infrastructure
- Identify strategies to improve resilience of the local infrastructure, including strategies linking land use & infrastructure planning

# CAMA 2006 Urban Services Boundary Map

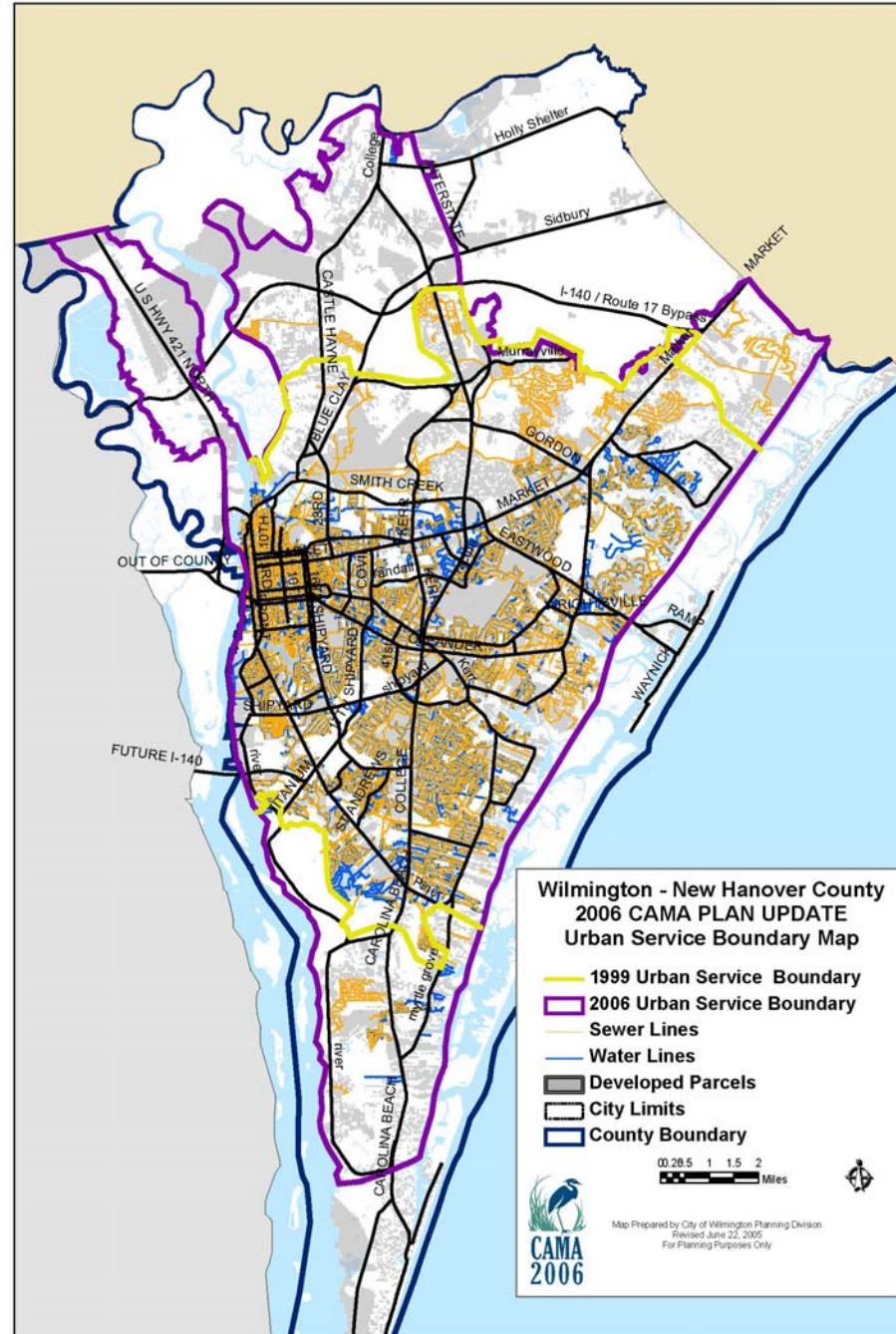


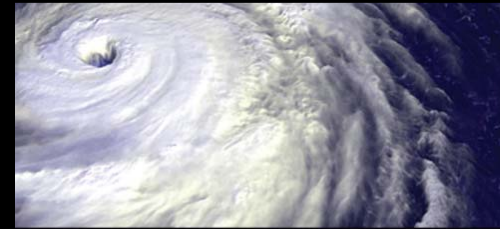
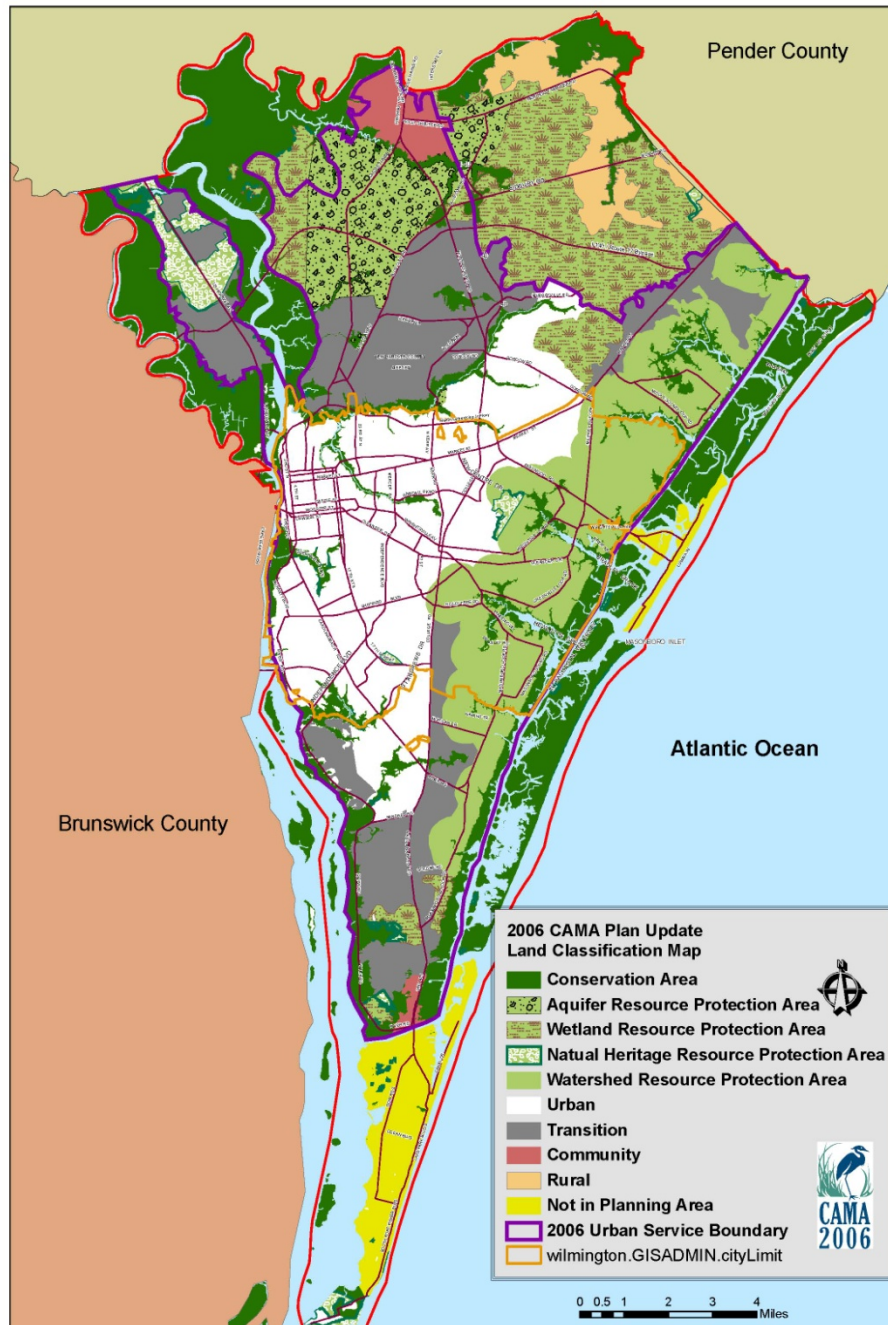


Photo Credit: City of Wilmington



Photo Credit: City of Wilmington

2006 Wilmington - New Hanover County CAMA Plan  
Land Classification Map Update



NEW HANOVER COUNTY  
NORTH CAROLINA

2010 MULTI-JURISDICTIONAL  
HAZARD MITIGATION PLAN UPDATE

SEPTEMBER 2010

PREPARED BY:

**PBSJ**



<http://www.nhcgov.com/EM911/Pages/HazardMitigation.aspx>

# Next Steps

- Finalize project scopes
- Select contractor for projects
- Identify opportunities to leverage partner resources
  - Brownfields Area- Wide Planning Pilot Program
  - HUD Sustainable Communities Regional Planning Grant

Questions

# Contacts

Linda Rimer, US EPA:

[Rimer.Linda@epamail.epa.gov](mailto:Rimer.Linda@epamail.epa.gov)

Adhir Kackar, US EPA:

[kackar.adhir@epa.gov](mailto:kackar.adhir@epa.gov)

Sarah van der Schalie, NOAA:

[sarah.vanderschalie@noaa.gov](mailto:sarah.vanderschalie@noaa.gov)