

# **2012 NOAA in the Carolinas Meeting**

## **Resiliency and Water Resources Breakout Session**

**NWS-SERFC**

**John Schmidt, DOH**

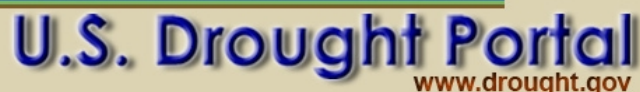
**March 15, 2012**

## NWS-SERFC Briefing & Discussion

1. Overview of NIDIS SE Pilot Project in the Apalachicola-Chattahoochee-Flint (ACF) Basin
2. Introduction of NIDIS Carolina Pilot Project Proposal
3. SERFC Science Update (CHPS, SNOW Modeling, Short Term Ensembles, Extending Water Forecasting to the Sea)

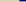
## Timeline of ACF Pilot Project

- Spring 2008...Southeast US NIDIS Expansion Meeting in Peachtree City, GA.
- 2008-2009...Three regional NIDIS meetings held to identify existing drought-related observational and forecasting capabilities amongst topic experts in ACF region.
- 2009-2010...Three regional NIDIS *stakeholder meetings* held across ACF region to demonstrate drought-related capabilities and identify service gaps.
- Early 2011...Operational, monthly Drought Early Warning System (DEWS) briefings for stakeholders.



[www.drought.gov](http://www.drought.gov)

Search:

	HOME	WHAT IS NIDIS?	CURRENT DROUGHT	FORECASTING	IMPACTS	PLANNING	EDUCATION	RESEARCH	RECOVERY	REPORTS
---	------	----------------	-----------------	-------------	---------	----------	-----------	----------	----------	---------

Select State...   Go

Select Region...   Go

- [Map & Data Viewer](#) - **new!**
- [Geodata Portal](#)
- [Drought Monitor Graphics](#)
- [CRN Soil Data](#)

- Risk Management Meeting 11/2011
- ACF Climate Outlook Forum and Pilot Review Meeting 2011
- Engaging Preparedness Communities Webinar, Dec 13th 1-2 PM EST

[View Archive](#) | [Portal Release Notes](#)

- ACFB Drought Assessment Webinar - February 28th, 2012

- ACF Briefing Presentation - January 17th, 2012
- Managing Drought in the Southern Plains
- ACF Briefing Presentation - November 15th, 2011
- Colorado - weekly, 12PM EDT
- South Central Drought Briefing - November 10th, 11 AM CDT

- [City Adjusts Water Use for New Restrictions](#)
- [Texas drought twists migrations of many birds](#)
- [Report: Drought costs state \\$5.2B in 2011](#)
- [Cattle inventory drops to lowest since 1952 on drought](#)
- [Drought Crisis Leads To Increased hay Prices](#)

### Where are Drought Conditions Now?

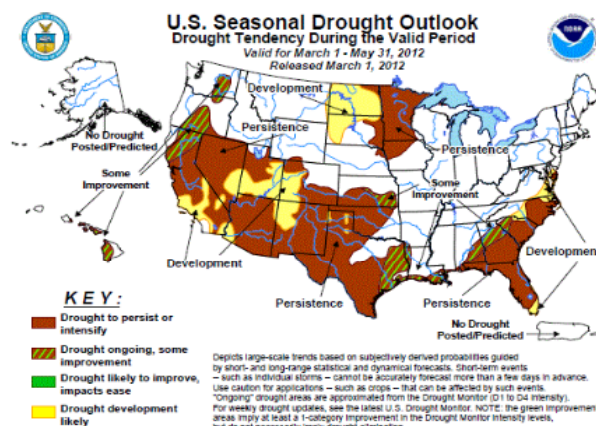
### How is the Drought Affecting Me?

### Will the Drought Continue?

**U.S. Seasonal Drought Outlook**  
Drought Tendency During the Valid Period  
Valid for March 1 - May 31, 2012  
Released March 1, 2012

Valid for March 1 - May 31, 2012  
Released March 1, 2012

Released March 1, 2012



A map of the United States with three specific regions highlighted. The 'Upper Colorado River Basin' is shown in the western United States, primarily in Colorado and Utah, with a reddish-brown color. The 'Four Corners Region' is located at the intersection of Arizona, New Mexico, Utah, and Colorado, highlighted in green. The 'Apalachicola-Chattahoochee-Flint River Basin' is located in the southeastern United States, spanning parts of Alabama, Georgia, and Florida, and is circled in black with a purple highlight.

[\(Click on an area to view the Drought Early Warning System - DEWS\)](#)

**INTERMOUNTAIN WEST CLIMATE SUMMARY**

A product of the Western Water Assessment

Received January 17, 2012, Vol. 8, Issue 1

**Deadliest – VNN Director**  
Jeff Leake, Phil Barker, Victor Zeng, Tim Ruckley – *PhillyVetters*  
Katie Vetter, Gary Dales – *App. Editor*

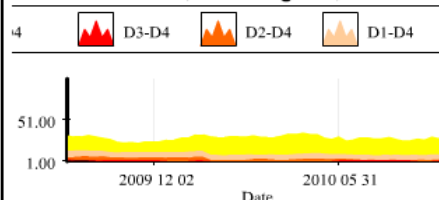
DOI: 10.1002/for

[Intermountain West Climate Summary](#) ▶▶

Click on a highlighted area to view the current NWS Drought Information Statement or [Click Here](#) to select from a list

[View larger map](#)

## %Area for U.S., including AK, HI &amp; PR



ACFRB - Windows Internet Explorer
http://www.drought.gov/portal/server.pt/com
National Oceanic and Atmospe...
2012\_NinC\_Agenda\_2011-03-0...
ACFRB
drought.gov
File Edit View Favorites Tools Help
Amite-Comite Rivers and La...
Suggested Sites
Web Slice Gallery
Free Hotmail
Southeast River Forecast C...
Contact Us | Log In | Text-Only
Search:

**National Integrated Drought Information System**  
Regional Drought Early Warning System  
Apalachicola-Chattahoochee-Flint (ACF) River Basin

ACFRB HOME | WEATHER AND WATER SUPPLY | FORECASTS AND OUTLOOKS | MAP & DATA VIEWER | GOALS | STAKEHOLDERS | CONTACTS

ACFRB > Home

**Area Drought Info**  
Select State within the DEWS  
... >> Go  
Select Other Regional DEWS  
... >> Go

**Upcoming Meetings**

**Recent Updates**

- ACF Water Update, February 2012
- ACF Briefing Presentation 2/28/2012
- ACF Briefing Presentation 2/7/2012
- ACF Briefing Presentation 1/17/2012
- ACF Climate Outlook Forum and Pilot Review 2011
- ACF Water
- ACF Briefing Presentation (11/15/2011)
- ACF Briefing Presentation (10/25/2011)
- ACF Briefing Presentation (10/4/2011)
- ACF September 2011 Update
- Extreme Drought Spreads into North Georgia
- ACF Briefing Presentation (8/30/11)
- August 2011 ACF Update
- LaNina Watch (Aug 2011)
  - From CPC
  - From AgroClimate
- ACF Briefing Presentation (8/2/11)
- ACF Briefing Presentation (7/12/11)
- ACF Stakeholders Newsletter

**Featured Products**  

[Current Conditions](#)
[Impacts](#)
[Forecast](#)

**U.S. Drought Monitor**  
Southeast  
March 6, 2012  
Valid 7 a.m. EST

	Current	Nov	D0-D1	D1-D2	D2-D3	D3-D4	D4-D5	D5-D6	D6-D7
Current	26.24	73.76	60.02	32.47	10.04	1.62			
Last Week (5/10/2012 map)	24.97	75.03	56.78	36.03	24.26	8.11			
3 Months Ago (1/10/2011 map)	43.19	56.81	43.30	31.28	19.41	0.00			
Start of Calendar Year (1/1/2011 map)	40.38	55.62	43.05	28.62	18.71	0.00			
Start of Water Year (9/1/2011 map)	42.24	57.76	41.82	31.77	23.48	0.00			
One Year Ago (5/10/2011 map)	5.82	34.18	75.79	27.10	4.43	0.00			

**Intensity:**  
D0 Abnormally Dry  
D1 Drought - Moderate  
D2 Drought - Severe  
D3 Drought - Extreme  
D4 Drought - Catastrophic

The Drought Monitor focuses on broad-scale conditions. Local conditions may vary. See accompanying text summary for forecast statements.

Released Thursday, March 8, 2012  
Michael Brower, National Climatic Data Center, NOAA

<http://droughtmonitor.unl.edu>

**ACF River Basin**

**Southeast Data Resources**  

- Data Resources Spreadsheet

**Drought Monitor Time Series - Southeast**  

%Area for southeast  
D4 D3-D4 D2-D4 D1-D4 D0-D4

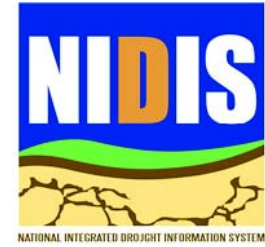
51.00  
1.00  
Date  
2010 05 31

Drought Classifications | Larger View

**Drought in the News**

- Special Report: South Georgia Drought 02/20/2012
- Southeast Georgia fire season could be repeat of 2011
- Inconsistent Weather Affects Winter Crops
- Deal Seeks Drought Disaster Aid
- Officials Ask Georgians to Temper Water Use
- 11th Circuit hands Georgia victory in water wars case | ajc.com
- S. Georgia waterways hurt by drought | ajc.com
- Wells Run Dry in South Georgia - GPB News

# National Integrated Drought Information System (NIDIS)



- Pilot Project in the Carolinas
  - Intended focus: coastal ecosystems
- Initial activities and workshops planned for spring-summer 2012
- Possible projects
  - Assess most appropriate drought indices for coastal ecosystems
  - Collaborate with resource managers to develop relevant information and tools for decision making
  - Improve the dissemination of drought information



## Recent SERFC Modeling and Forecasting Enhancements

- **CHPS Operational Implementation**
- **Multi-Meteorological Model Ensemble Forecast System (MMEFS)**
- **SNOW-17 Modeling**
- **Operational Integration of Hydraulic Models (Waccamaw River)**

# Community Hydrologic Prediction System (CHPS)

*A State-of-the-Art, Open Architecture Software and a New  
Business Model !*

**More flexibility to address upcoming  
major service enhancements**

- Short term ensemble forecasts
- Gridded hydrologic modeling
- Gridded water resources forecasts

**Simpler and accelerated research to  
operations path**

**Take advantage of community-  
developed models**

**Simpler and lower cost of software  
maintenance and addition of small  
enhancements**

- NWS developers concentrate on  
hydrology not infrastructure

**Potential to run models locally via  
remote sync to RFC (local operator  
client at WFO).**

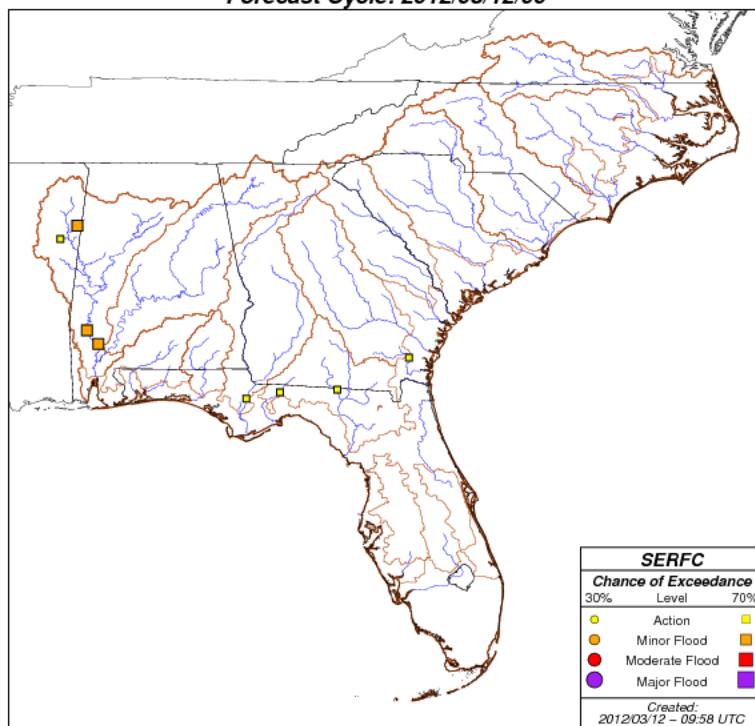
**Potential to provide external real-time  
operational (USACE) model  
simulations directly to RFC  
forecast process.**

**Ability to add instances of proven  
models to enhance public forecast  
products.**

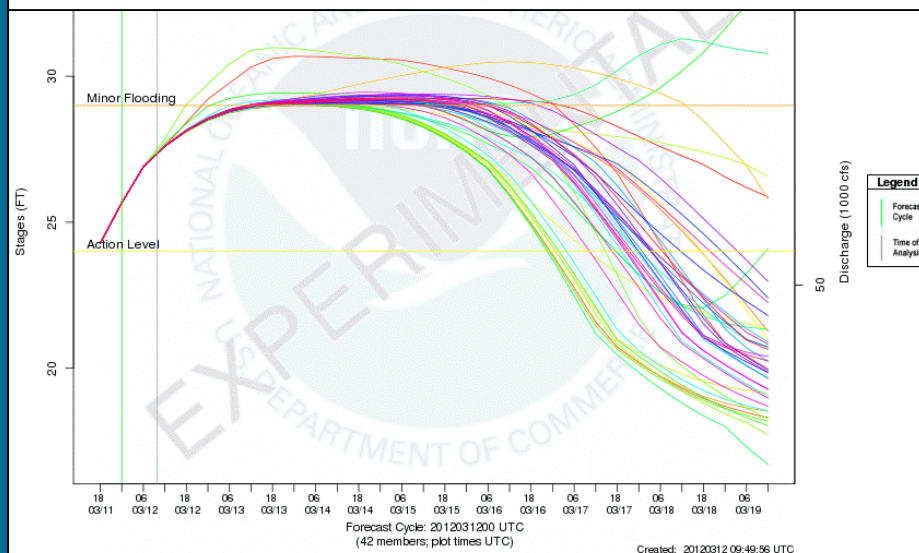
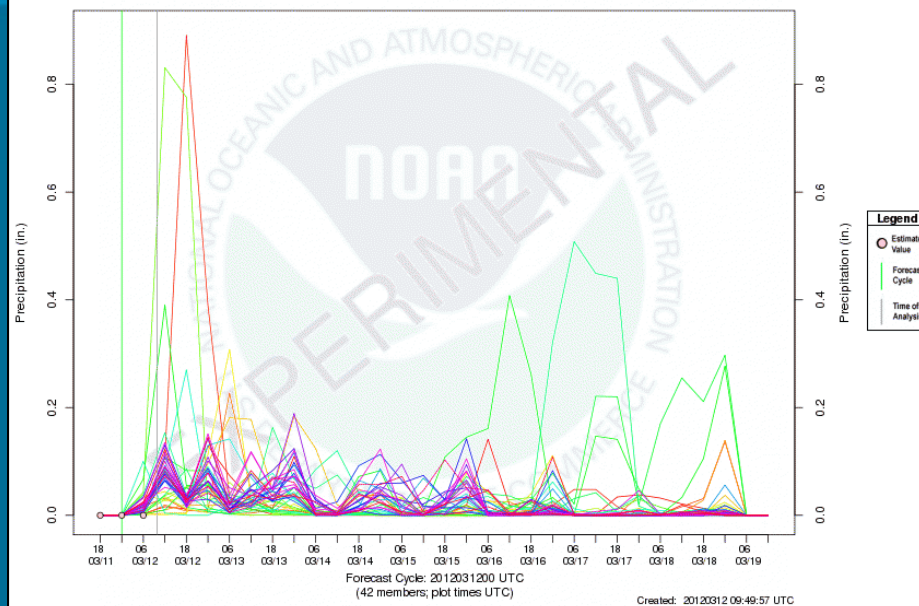
**Ability to add instances of  
experimental models to enhance  
research efforts (R2O).**

# MMEFS

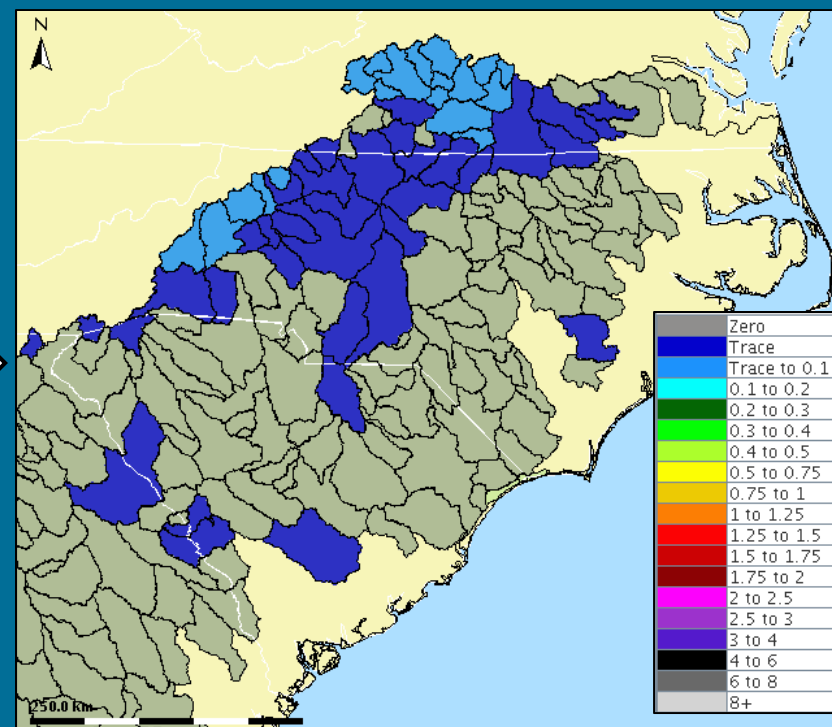
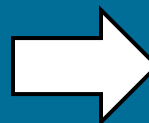
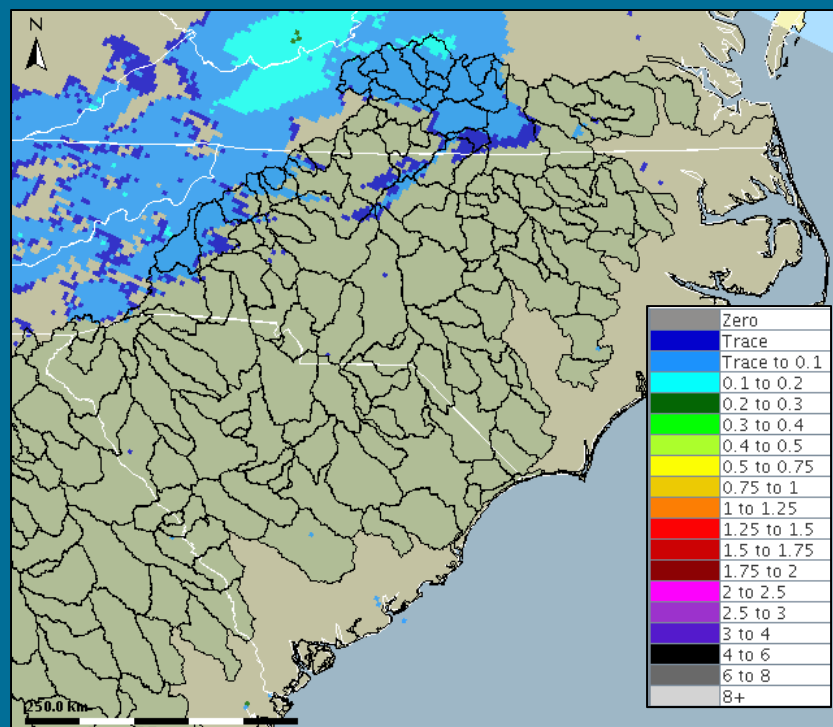
**NAEFS Ensemble Summary for 03/12/2012 – 03/19/2012**  
Forecast Cycle: 2012/03/12/00



**NAEFS-based Local Basin-average Precipitation Traces**  
Tombigbee River at Coffeerville, AL (CLDA1)  
Analysis for the period 03/11/2012 18 UTC - 03/19/2012 12 UTC

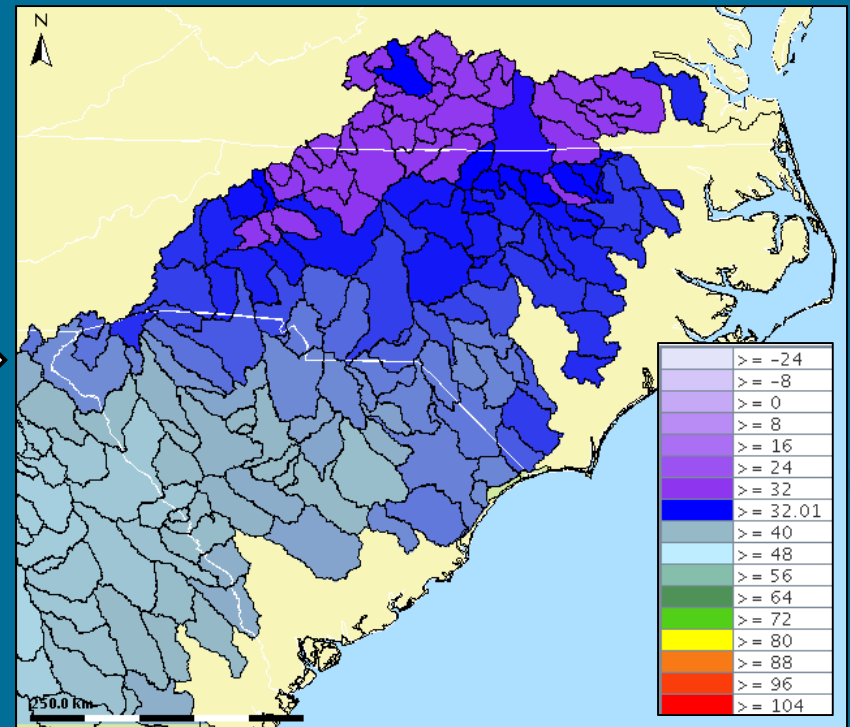
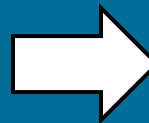
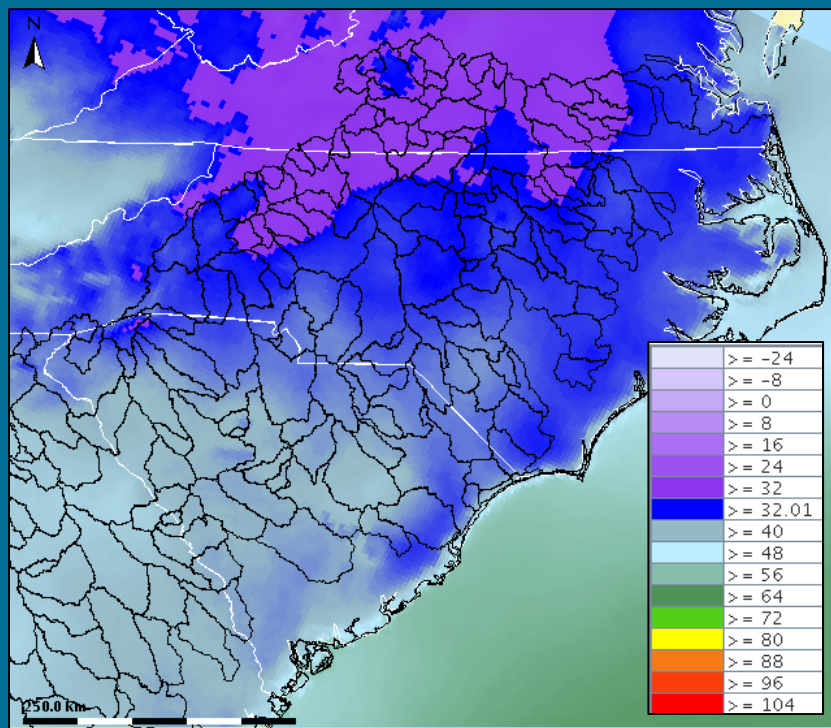


# SNOW-17



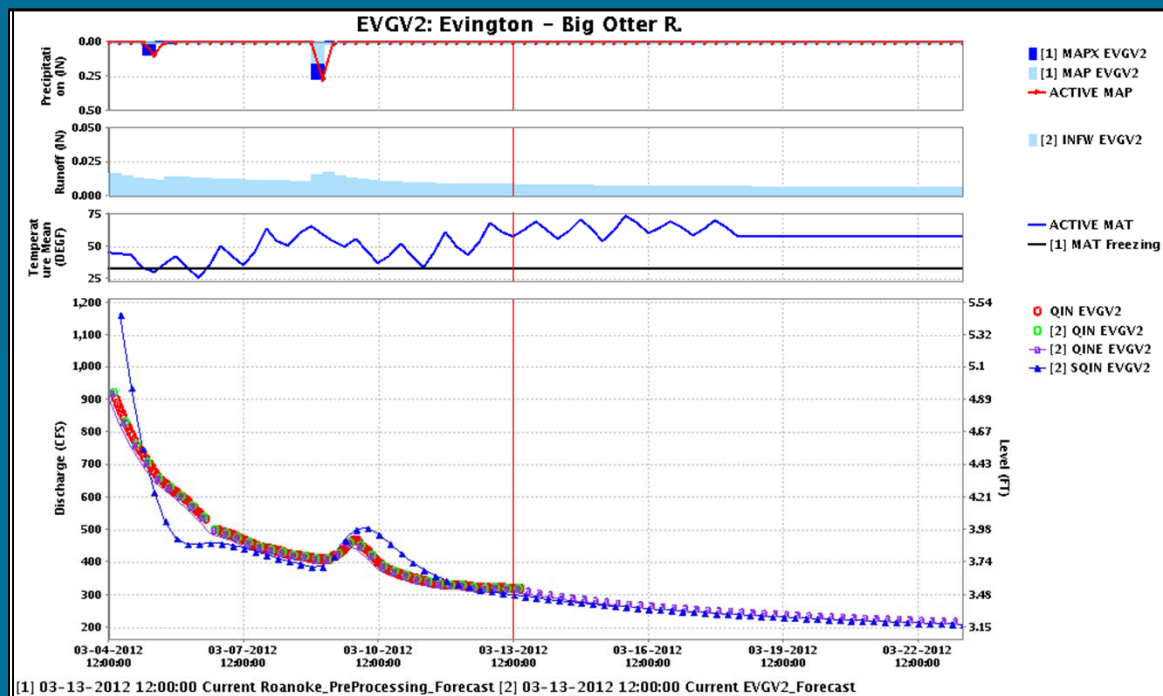
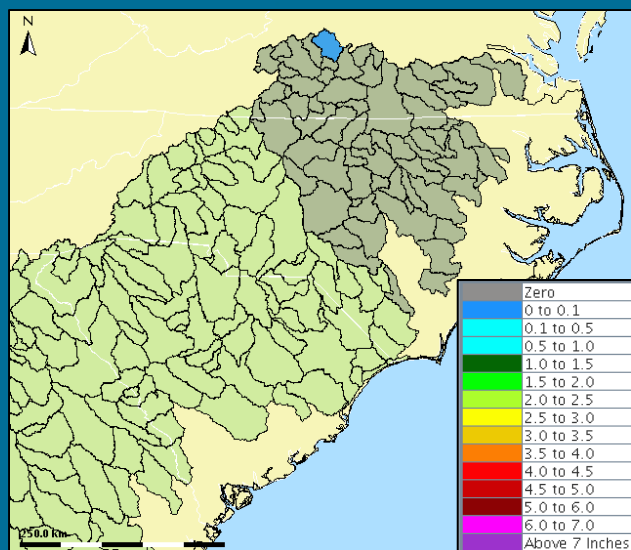
6-hour Precipitation Input

# SNOW-17

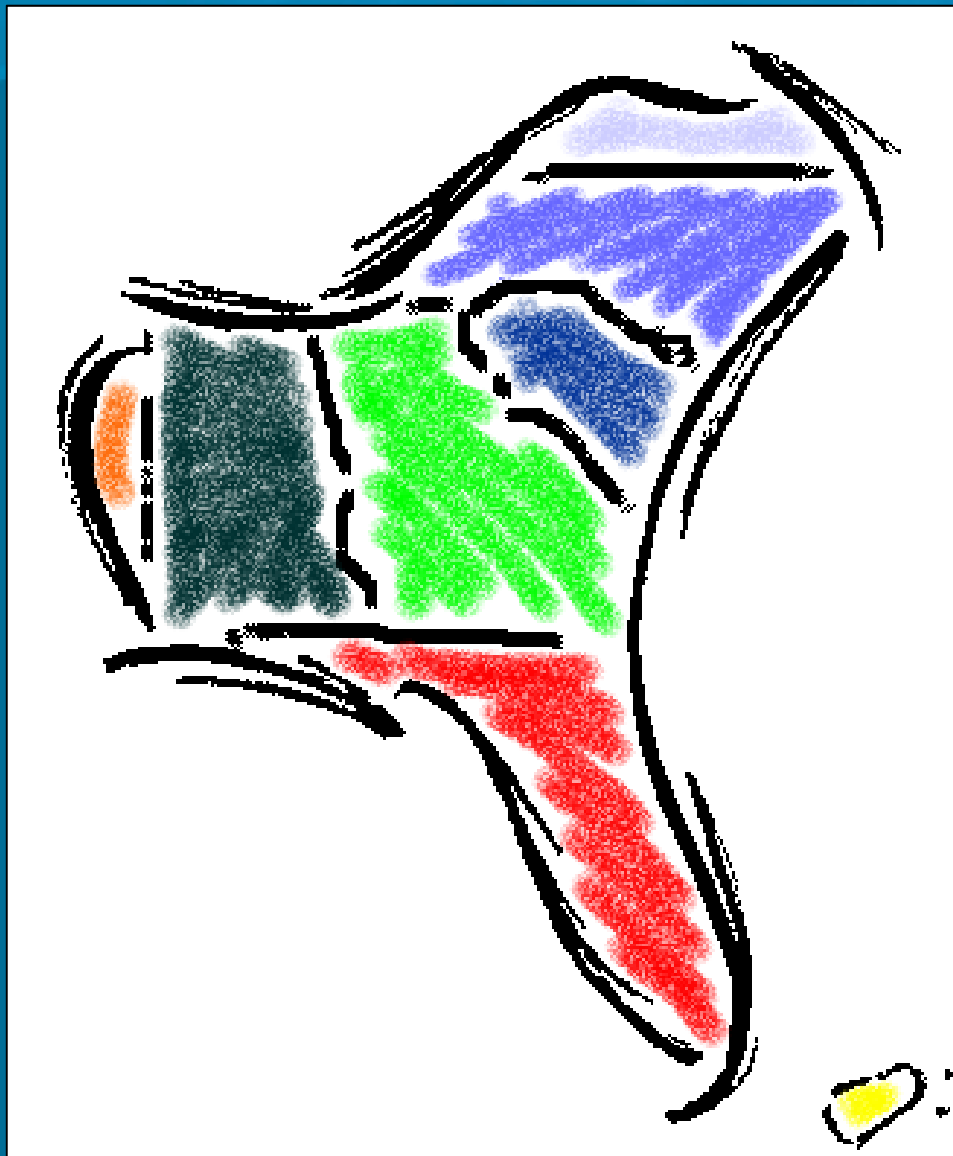


6-hour Temperature Input

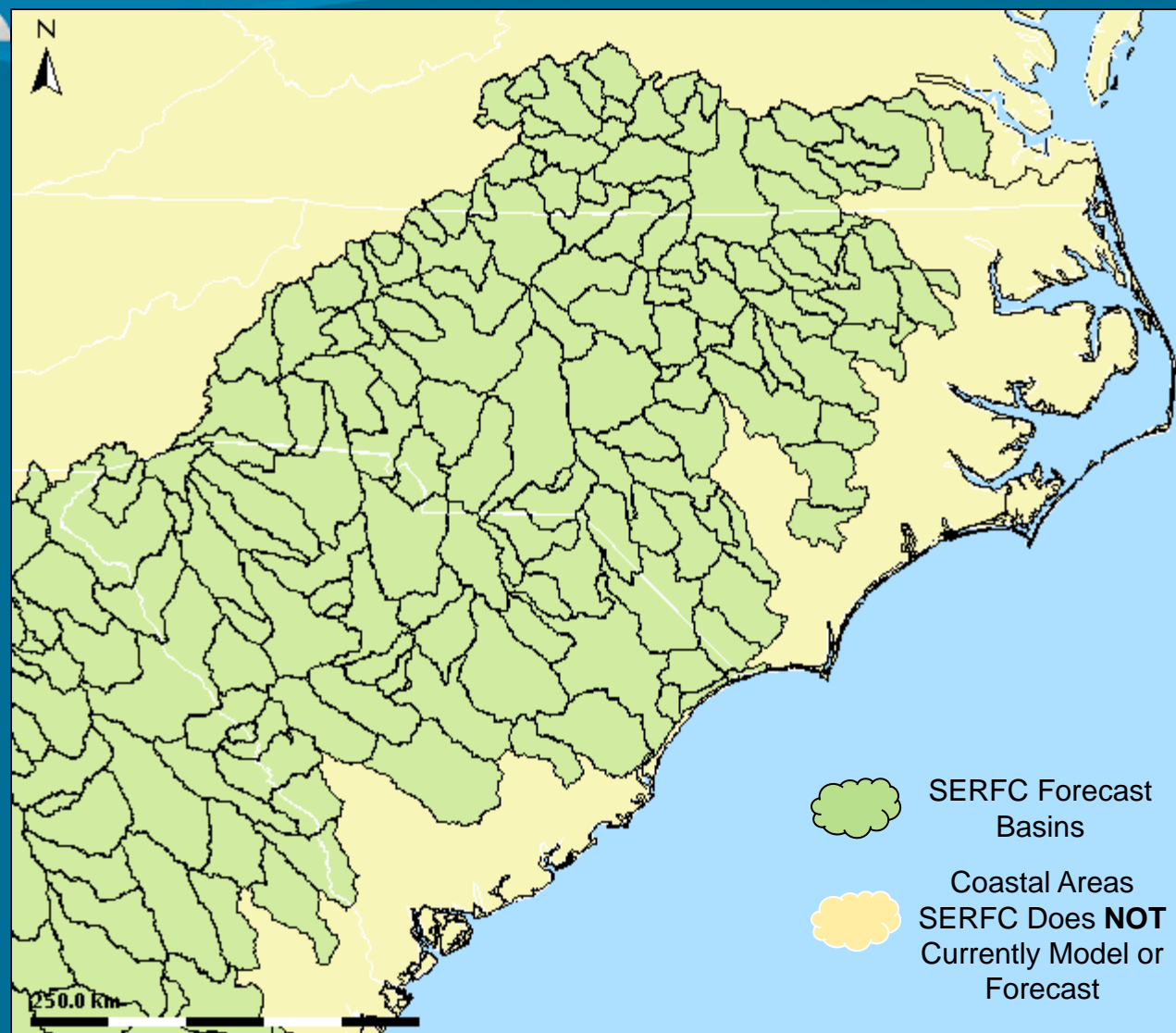
# SNOW-17



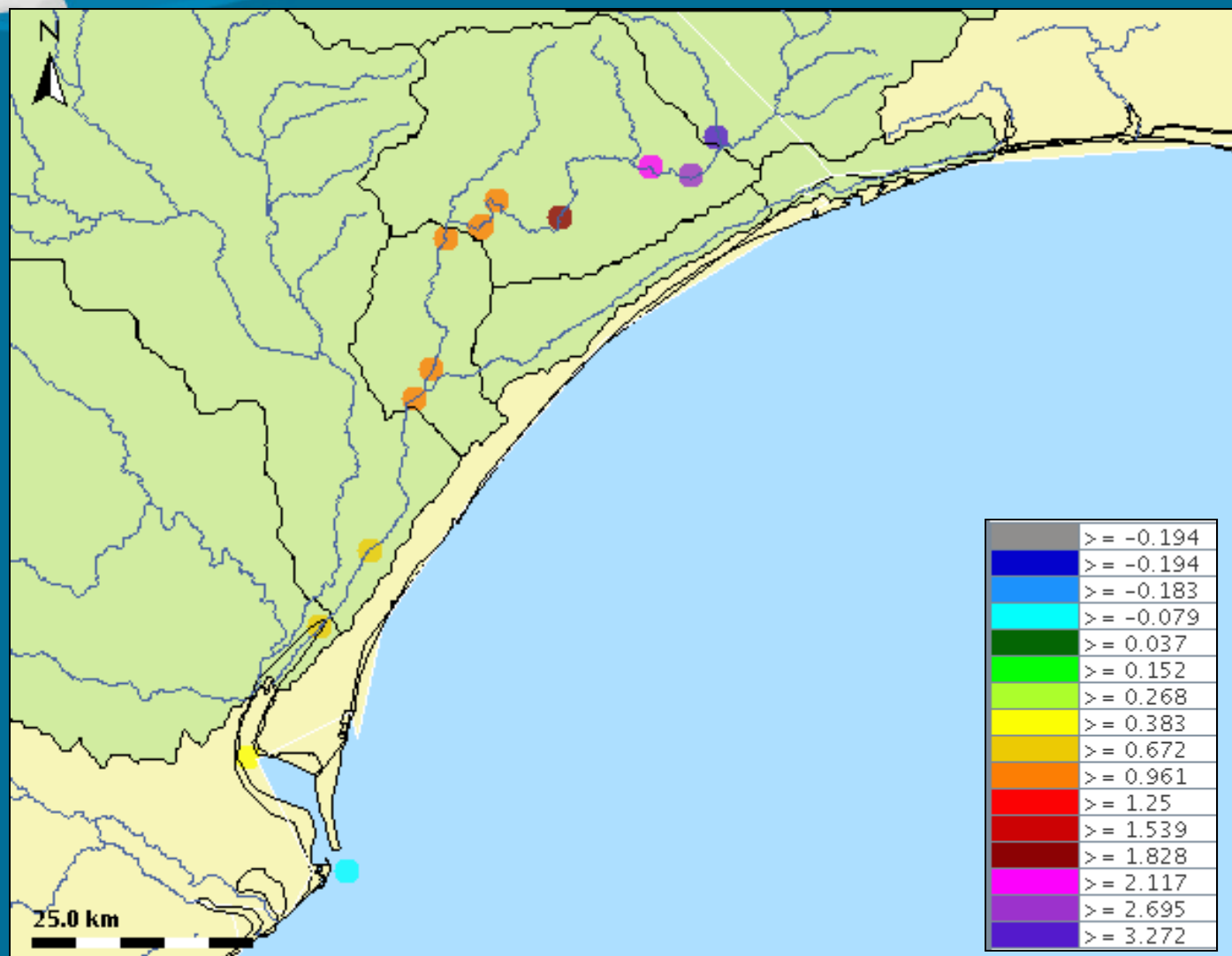
## SERFC Service Area



# SERFC Modeling/Forecasting Extent

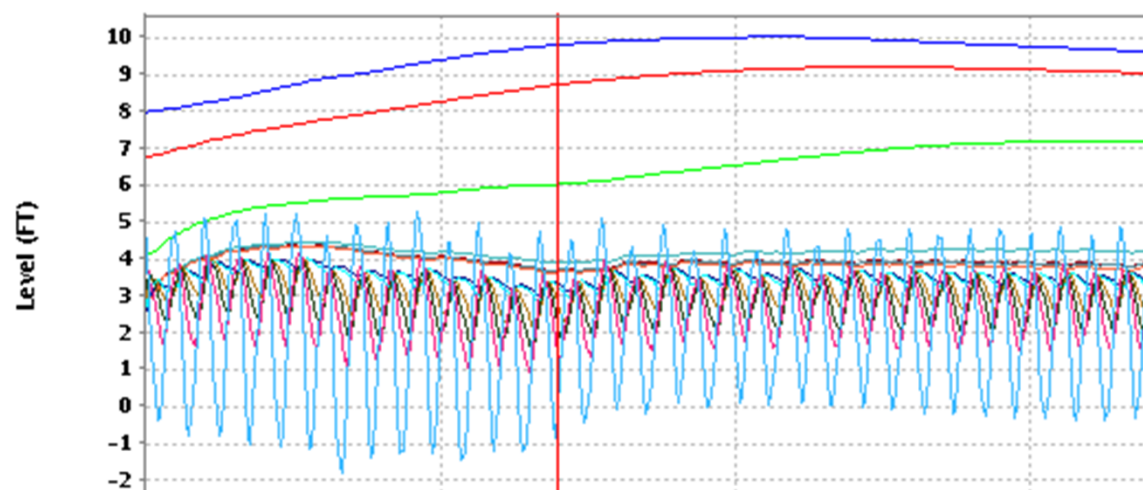


# Hydraulic Modeling

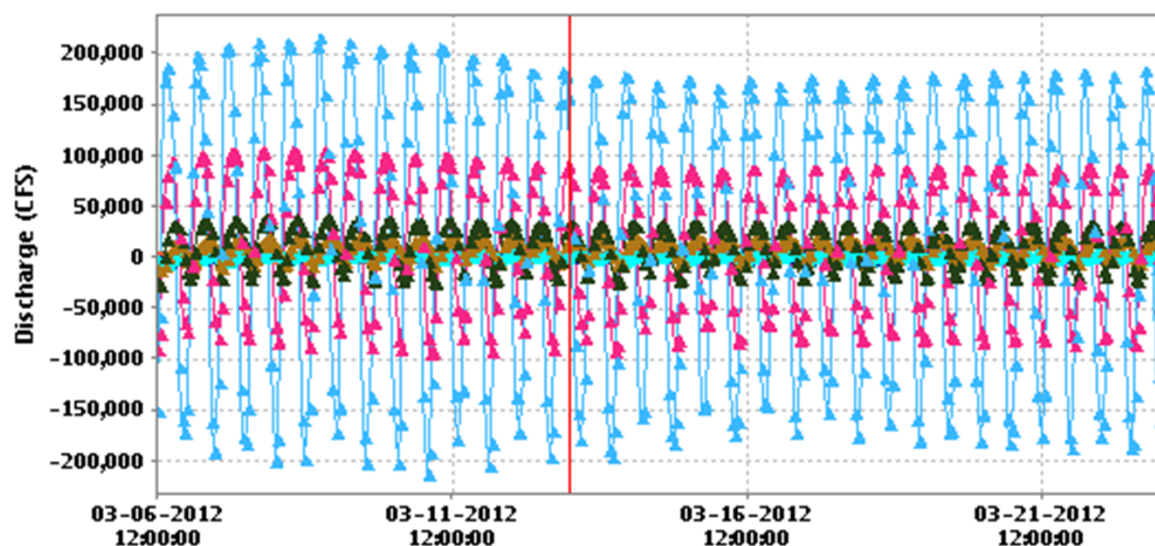


# Hydraulic Modeling

## INTER. SECTIONS: HEC-RAS OUTPUT



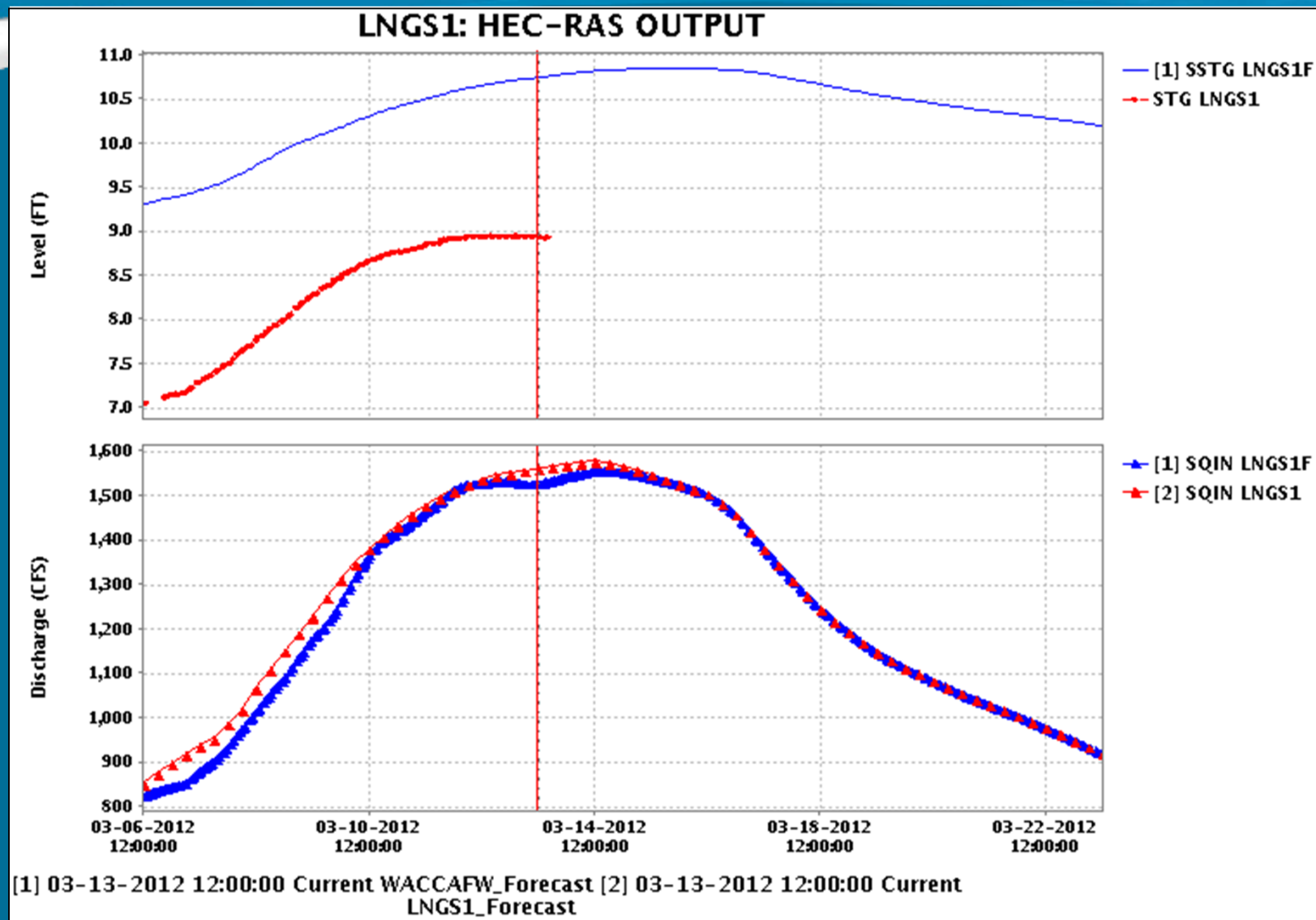
- [1] SSTG Waccamaw Section 88.69
- [1] SSTG Waccamaw Section 82.69
- [1] SSTG Waccamaw Section 67.95
- [1] SSTG Waccamaw Section 59.12
- [1] SSTG Waccamaw Section 57.07
- [1] SSTG Waccamaw Section 56.71
- [1] SSTG Waccamaw Section 53.15
- [1] SSTG Waccamaw Section 40.81
- [1] SSTG Waccamaw Section 37.97
- [1] SSTG Waccamaw Section 25.28
- [1] SSTG Waccamaw Section 19
- [1] SSTG Waccamaw Section 8.74
- [1] SSTG Waccamaw Section 0



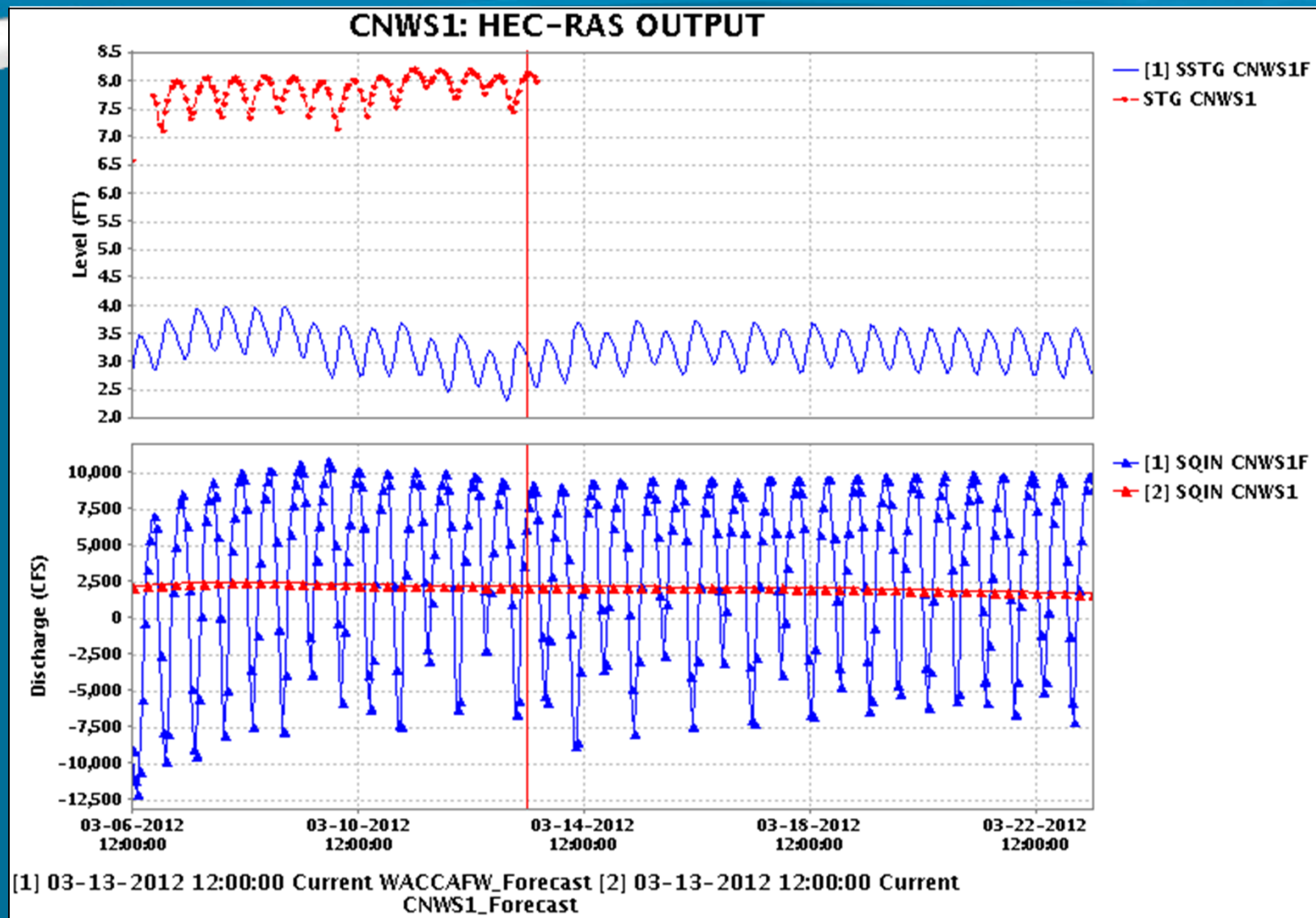
- [1] SQIN Waccamaw Section 88.69
- [1] SQIN Waccamaw Section 82.69
- [1] SQIN Waccamaw Section 67.95
- [1] SQIN Waccamaw Section 59.12
- [1] SQIN Waccamaw Section 57.07
- [1] SQIN Waccamaw Section 56.71
- [1] SQIN Waccamaw Section 53.15
- [1] SQIN Waccamaw Section 40.81
- [1] SQIN Waccamaw Section 37.97
- [1] SQIN Waccamaw Section 25.28
- [1] SQIN Waccamaw Section 19
- [1] SQIN Waccamaw Section 8.74
- [1] SQIN Waccamaw Section 0

[1] 03-13-2012 12:00:00 Current WACCAFW\_Forecast

# Hydraulic Modeling



# Hydraulic Modeling



# Hydraulic Modeling

